



KNOW MORE

+91 9404953482

WWW.CDAT.CO.IN

System of Pension Illustration (SOPI)




**Zilha Parishad and Primary
Education Department**

System Features

The System of Pension Illustration (SOPI) is a cloud-based web application meticulously designed to administer retirement salary disbursements for employees within the District Council and the Primary Education Department. It operates seamlessly across three hierarchical levels: Panchayat Samiti, Primary Health Center, and District Council. The system classifies retirement salaries into four distinct categories:

- Service Retirement Salary
- Family Retirement Salary
- Voluntary Retirement Salary
- Compulsory Service Retirement Salary

- **Employee Data Repository:** SOPI acts as a repository for comprehensive individual employee data, encompassing salary particulars, service-related information, audit lists, and other pertinent data.
- **Pension Case Processing Optimization:** The system optimizes the workflow and processing of pension cases, especially at the District Council and Panchayat Samiti levels.
- **Pension Case Tracking:** Following case initiation, the system efficiently tracks cases as they progress through review and approval stages, particularly when handled by senior officers.
- **Automated Reports and Order Generation:** The Finance Department, situated at the district level, automatically generates payment orders, including Pension Payment Orders (PPO), Commutation Payment Orders (CPO), and Gratuity Payment Orders (GPO), streamlining the disbursement process.
- **General Administration Department Integration:** Proposed retirement salary cases for all participating departments within a fiscal year are systematically submitted via the system's interface, facilitated by the General Administration Department.

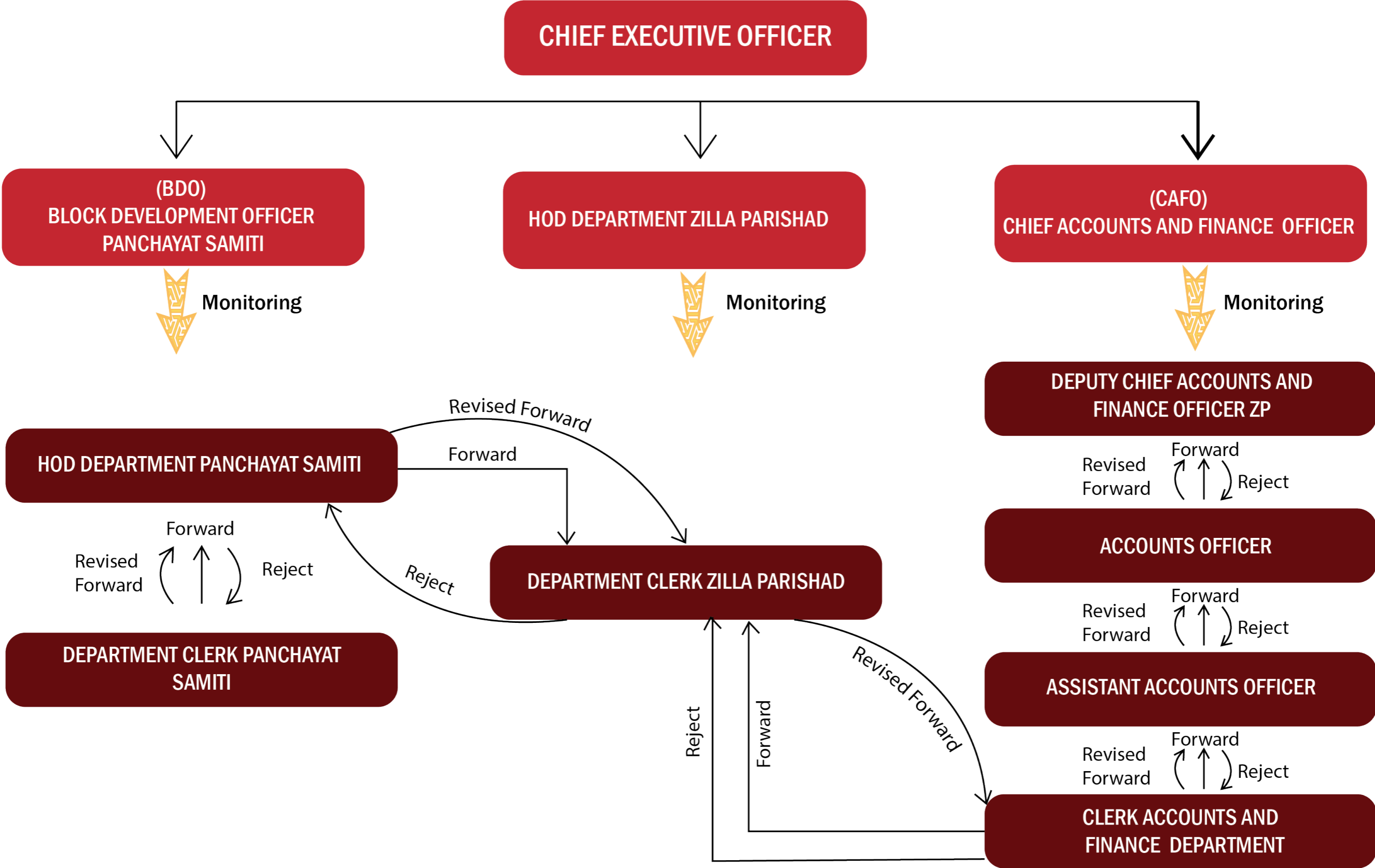
- 
Auto calculation of Various Amounts: The system incorporates a robust salary calculation that accurately computes service pension amount, gratuity amounts, commutation amounts, and family pension amount.
- 
Instant Reporting: Upon the input of pension holder information into the system, real-time reports become instantly available at the Panchayat Samiti and District Council levels, streamlining decision-making processes.
- 
Personalized Dashboards: Users at various system levels are granted access to personalized dashboards, which furnish them with vital insights into pending cases, transferred cases, and approved cases, facilitating efficient case management.

In essence, SOPI is a sophisticated cloud-based web application that harmonizes retirement salary disbursements, optimizes case processing, and ensures transparency and efficiency in the management of retirement-related affairs across different levels of governance.

Proposed Users

Sr. No	User Level
1.	Chief Executive Officer
2.	Chief Account and Finance Officer(CAFO)
3.	Deputy Chief Account and Finance Officer(DyCAFO)
4.	Account Officer
5.	Head of Department at District Council
6.	Clerk at District Council Department
7.	Block Divisional Officer
8.	Clerk at Panchayat level Department

SYSTEM OF PENSION ILLUSTRATION (SOPI)



System Existing Users:

1. Zilha Parishad Nashik
2. Zilha Parishad Solapur
3. Zilha Parishad Raigad
4. Zilha Parishad Wardha
5. Zilha Parishad Dharashiv